

ETHIRAJ COLLEGE FOR WOMEN (Autonomous)
Chennai - 600 008

Affiliated to the University of Madras
College with Potential for Excellence
Reaccredited with A+ Grade by NAAC



1.4 FEEDBACK SYSTEM

1.4.1 STRUCTURED FEEDBACK FOR CURRICULUM DESIGN & REVIEW OF SYLLABUS

***CURRICULUM FEEDBACK- ALUMNAE
(2021-2022)**

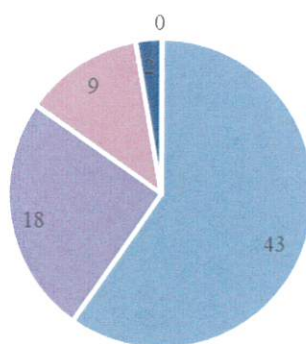


CURRICULUM FEEDBACK - ALUMNAE

1. There is a good balance between theory and application in the syllabus

Options	Number of Responses
Strongly Agree	43
Agree	18
Neutral	9
Disagree	2
Strongly Disagree	0
Total	72

There is a good balance between theory and application in the syllabus



■ Strongly Agree ■ Agree ■ Neutral ■ Disagree ■ Strongly Disagree

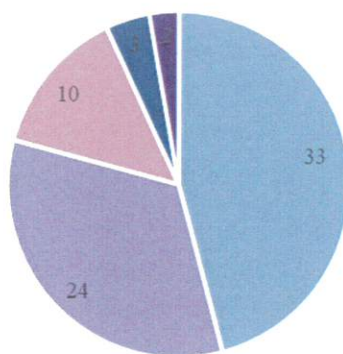
S. Manojamma



2. The course content meets the demands of the industry

Options	Number of Responses
Strongly Agree	33
Agree	24
Neutral	10
Disagree	3
Strongly Disagree	2
Total	72

The course content meets the demands of the industry



■ Strongly Agree ■ Agree ■ Neutral ■ Disagree ■ Strongly Disagree

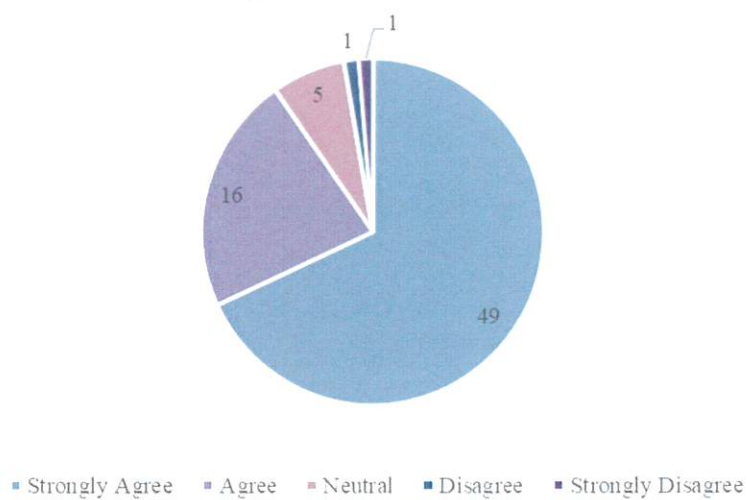
S. Murugesan



3. The syllabus is career-oriented

Options	Number of Responses
Strongly Agree	49
Agree	16
Neutral	5
Disagree	1
Strongly Disagree	1
Total	72

The syllabus is career-oriented



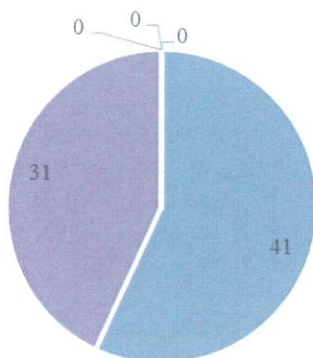
S. Murugesan



4. The syllabus has prospects for higher education / employability / entrepreneurship

Options	Number of Responses
Strongly Agree	41
Agree	31
Neutral	0
Disagree	0
Strongly Disagree	0
Total	72

The syllabus has prospects for higher education /
employability / entrepreneurship



■ Strongly Agree ■ Agree ■ Neutral ■ Disagree ■ Strongly Disagree

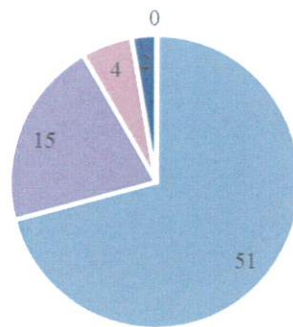
S. Mageswari



5. Project work/ internships undertaken during the period of study was challenging, constructive and helped in gaining professional experience

Options	Number of Responses
Strongly Agree	51
Agree	15
Neutral	4
Disagree	2
Strongly Disagree	0
Total	72

Project work/ internships undertaken during the period of study was challenging, constructive and helped in gaining professional experience



■ Strongly Agree ■ Agree ■ Neutral ■ Disagree ■ Strongly Disagree

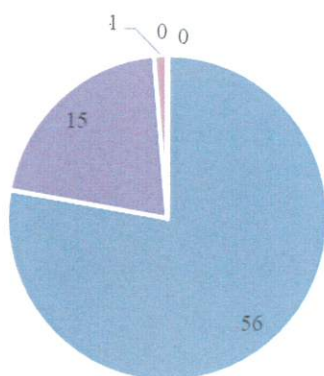
S. Narayanaswami



6. The syllabus is learner-centered and encourages self-learning

Options	Number of Responses
Strongly Agree	56
Agree	15
Neutral	1
Disagree	0
Strongly Disagree	0
Total	72

The syllabus is learner-centred and encourages self-learning



■ Strongly Agree ■ Agree ■ Neutral ■ Disagree ■ Strongly Disagree

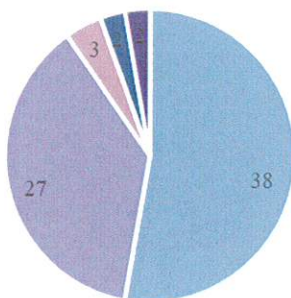
S. Murugesan



7. The syllabus develops problem-solving ability, creative thinking skills, analytical skills, life skills and communicative skills of the learners

Options	Number of Responses
Strongly Agree	38
Agree	27
Neutral	3
Disagree	2
Strongly Disagree	2
Total	72

The syllabus develops problem-solving ability, creative thinking skills, analytical skills, life skills and communicative skills of the learners



■ Strongly Agree ■ Agree ■ Neutral ■ Disagree ■ Strongly Disagree

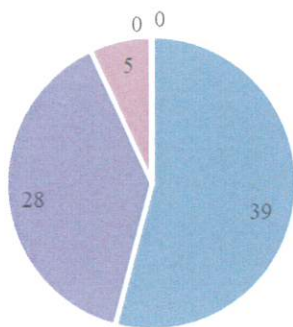
S. Murugesan



8. The course content addresses local, national and global issues including issues pertaining to gender, environment and sustainability

Options	Number of Responses
Strongly Agree	39
Agree	28
Neutral	5
Disagree	0
Strongly Disagree	0
Total	72

The course content addressed local, national and global issues including issues pertaining to gender, environment and sustainability



■ Strongly Agree ■ Agree ■ Neutral ■ Disagree ■ Strongly Disagree

A handwritten signature in green ink, reading 'S. Mageswari'.

PRINCIPAL
ETHIRAJ COLLEGE FOR WOMEN
(AUTONOMOUS)
CHENNAI-600 008.